

**2023**  
ANNUAL UPDATE



THE  
**Barry Joyce**  
CANCER RESOURCE CENTER





# CELEBRATING 10 YE

## THE Barry Joyce

CANCER RESOURCE CENTER

*"The absolute best part is when I overhear folks talking about the difference The Center makes. How it has changed their lives and given them a sense of purpose."*

— Jennifer Joyce, Executive Director

## 2013-2023

**10,119 TRIPS**  
for radiation/chemo

**21,783 MEALS**  
for our friends in need

**1,660 MONTHS**  
of heating and air service for patients and their families

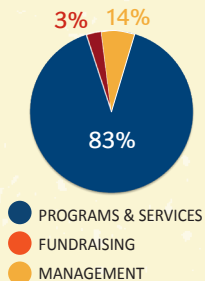
**28,098 VOLUNTEER HOURS**  
to maximize donor dollars

**19,220 SERVED**  
since opening the Center

# ARS OF THE CENTER

Ten years since opening The Barry Joyce Cancer Resource Center and nearly 20,000 friends have benefitted from our programs. We have helped every single person that has applied and been in need of assistance. Whether helping with power bills or gas cards, support groups or food, information or guidance, there is no other organization in our area that offers anything similar.

Barry's vision continues and helps assure no one in our area fights cancer alone. We are a staff of one, backed by community volunteers. Your support is crucial as we do not receive funding from the government, United Way, or any national organization.





## PROGRAMS

We are a small and mighty force. Working beside our friends each and every day, we are aware of the need. Once identified, we do everything in our power to make it happen. And at absolutely no cost to our friends.

Nearly 3,000 friends have benefitted from our programs this year. With support groups, lunch and learns, creative escapes, and daycations there is always a reason to get out and be with others that truly get what you're going through. And our Barry's Feeding Friends program continues to provide nearly 500 meals each month with our meal boxes and drive-up dinners.

Children from throughout the county had a blast with our Barry's Buddies Day Camp. From Indiana Jones, the Science Center,



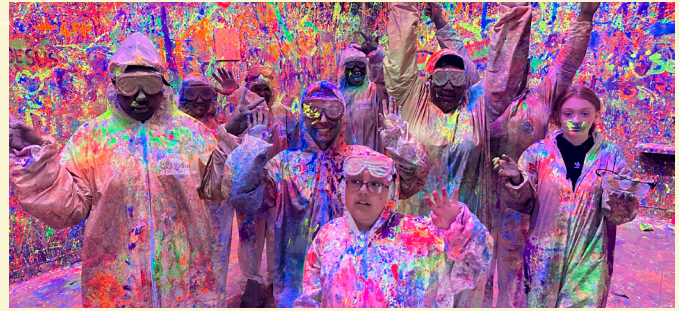
Celebration Station, and a local farm, they relished in being a kid. All are helping a loved one battle this terrible disease and all understand more than anyone what their new friends are carrying.

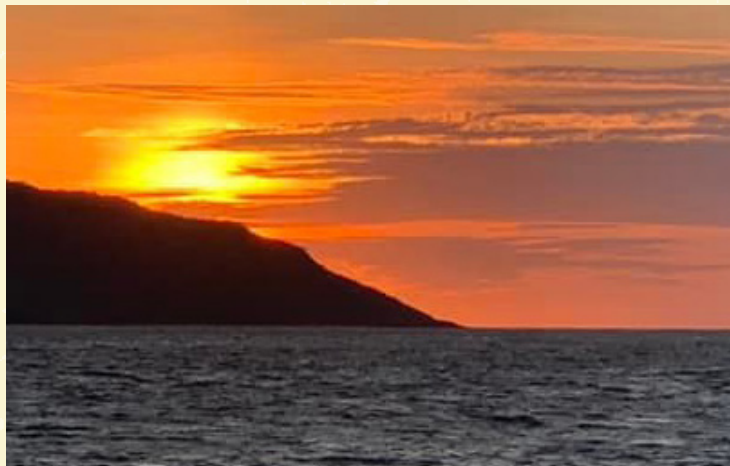
Our holiday season tradition will continue as we deliver boxes of food for Thanksgiving and Christmas dinners. These friends will also receive a \$100 credit toward their power bill and a \$100 gas card from Santa. Children of these friends will receive the Christmas they otherwise may not because of the financial toll of cancer. Cancer takes so much, but thanks to your generosity, it will not take away the holiday spirit for so many in our area that need and deserve our support.



*"You all have been there  
for me like no one else.  
My family avoids me and  
I don't have any friends.  
I don't know what I  
would do without you."*

*- Bruce*





## Barry's Bucket Wishes

Helping our friends with their bucket list is one of our favorite honors. Whether a family vacation or a catered dinner at home to be with their loved ones, we make it happen.

This year, a friend was able to revisit childhood memories at Nags Head with his siblings. Another enjoyed a trip to Myrtle Beach with her sisters and mother. Both trips included a place to stay, gas cards, and gift certificates for favorite local restaurants. We also arranged transportation for a daughter to take her parents to the mountains to enjoy the fall scenery for the day. We provided a van that





allowed for wheelchair access, as well as a gas card, and gift certificate for lunch.

Sometimes friends are not able to travel and we cater a meal for the entire family. It's all about making memories filled with happiness and being together, rather than being consumed with the thoughts of the reality of the current situation.

### **Barry's Buddies - The Adultish Version**

We all need to have fun being a kid and we made it a week of just that with our adult day camp! Painting pottery, visiting the Planetarium in Chapel Hill, bumper boats, go carts, lunches out, and so much more!





# FUNDRAISERS



Our fundraisers and the community's support of them help make all we do possible and we are beyond grateful.

Teams throughout the county made this our most successful **30 Days of Impact** campaign. With more events and gatherings, our goal of spreading awareness while raising funds was exceeded. These included pickleball tournaments, walks, hymn singings, steak dinners, luaus, wine tastings, and more.

Please consider joining us by having a team for our 2024 30 Days of Impact. Gather a group and make a direct impact. It's easy because you choose where and when to have your event and what kind of event you want it to be. Whatever works for you!

Check out our link at  
<http://bljcancerfund.org/events/30-days-of-impact/>  
or call us at 336-427-4357 for more information.





Our 22nd Annual [Barry Joyce Kicking Cancer Challenge](#) was also our most profitable. We filled the field early and had more individual and corporate sponsors. We are beyond humbled and grateful for the support and showing from players, donors, and volunteers. Mark your calendar for September 23, 2024 so you can register early!



# GET INVOLVED

Depending on your time and availability, there are many ways you can get involved with our Fund and we would be honored to have you. Please call or stop by and let us know how you would like to get involved.

## EVENTS

We're always looking for volunteers to work different shifts at our fundraising or awareness events.

## THE BARRY JOYCE CANCER RESOURCE CENTER

We are always needing drivers to get folks to and from the Center for activities as well as to their treatments. You may even be interested in helping with one of our programs, including creative escapes and lunch and learns.

The Barry L. Joyce  
Local Cancer Support Fund  
725 Ayersville Road,  
Madison, NC 27025  
336-427-HELP (4357)

## HEAD YOUR OWN 30 DAYS OF IMPACT TEAM

Join our annual spring campaign to help increase awareness and raise funds so that we can help more people.

## SERVE ON OUR BOARD OF DIRECTORS

A great way to join other members of the community and have an influence in how our Fund operates. Be it strategic plans, fundraisers, financial-aid decisions, and much more, our board is the core of what makes up our Fund.



@bljcancerfund

bljcancerfund

[www.bljcancerfund.org](http://www.bljcancerfund.org)





We could not do  
all that we do  
without your support.

From the bottom  
of our hearts,  
**thank  
you.**



THE  
**Barry L. Joyce**  
LOCAL CANCER SUPPORT FUND

## DONATION CARD

Name \_\_\_\_\_

Address \_\_\_\_\_

Email \_\_\_\_\_

☐ IN HONOR OF \_\_\_\_\_

☐ IN MEMORY OF Name \_\_\_\_\_

☐ IN HONOR OF \_\_\_\_\_

☐ IN MEMORY OF Name \_\_\_\_\_

☐ IN HONOR OF \_\_\_\_\_

☐ IN MEMORY OF Name \_\_\_\_\_

☐ IN HONOR OF \_\_\_\_\_

☐ IN MEMORY OF Name \_\_\_\_\_

Please make checks payable to:  
Barry L. Joyce Local Cancer Support Fund

Total

\$

Mail to: 725 Ayersville Road,  
Madison NC 27025

Credit Card donations are also welcome at [bljcancerfund.org/donate](http://bljcancerfund.org/donate)





# THE Barry L. Joyce

LOCAL CANCER SUPPORT FUND

725 Ayersville Road  
Madison NC 27025

[www.bljcancerfund.org](http://www.bljcancerfund.org)

“It has been difficult for me to ask for help. **I am grateful to have found you,** otherwise I would be navigating my cancer journey myself. Since coming to the Center, I have felt a sense of reassurance that things are going to be ok.” – Pamela